

# LINE+ TIMBER | SF-LINE+

Hinged Door System

Boxkel by Saheco | [saheco.com](https://saheco.com)

Proyecto: Balance - Estudio: Ira Ostrovska

**BOXKEL**  
by Saheco





## Boxkel **LINE+** TIMBER

Flush doors, also known as wall-integrated or concealed doors, go by different names but are most commonly referred to as invisible doors. Their frameless design, perfectly aligned with the wall surface, creates a flawless visual continuity, allowing them to blend seamlessly into their surroundings and remain completely unobtrusive.

With Line+ invisible door frames reach a new level of versatility. Its adjustable frame—both in height and width—allows the hinges and closer catch to be positioned freely, enabling installation in any opening direction



## — What does Line+ Timber offer?

### MODULAR SOLUTION

- **Modular and Universal System**

Adjustable frame in height and width, compatible with any configuration: left, right, push, or pull. A single kit for all possible options.

- **Straight Profile Cutting**

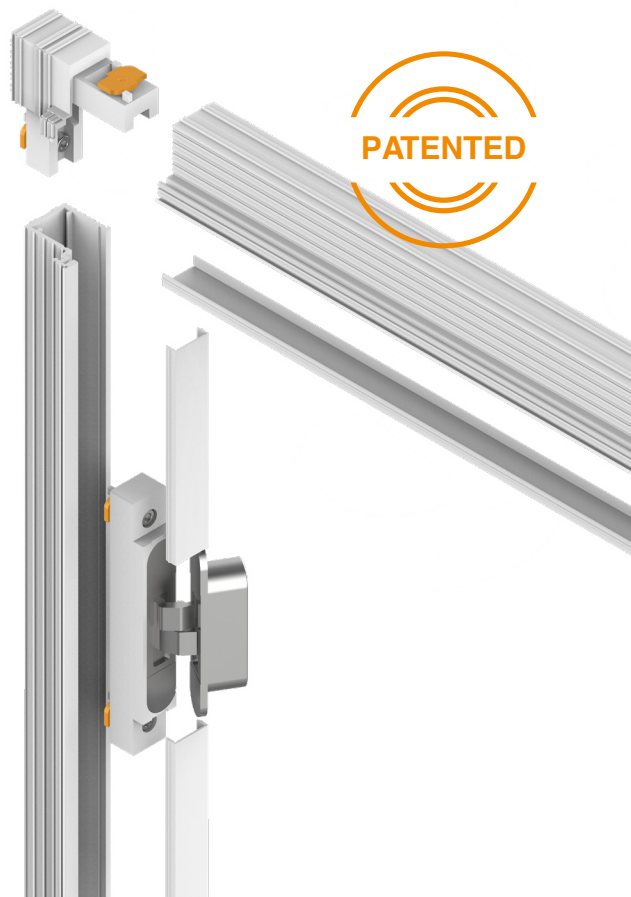
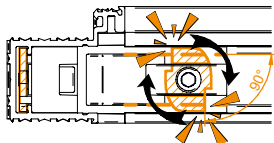
The 90° corner joint allows for straight cuts of the profiles to the desired size, making assembly easier and reducing on-site errors.

- **Compatibility with Multiple Brands**

Works with 3D hinges from AGB, Krona, and Simonswerk, among others, using interchangeable adapters.

- **Secure Fixing with Metal Plate**

The integrated plate anchoring system ensures quick, precise, and stable installation of all frame components.



- **Height-Adjustable Adapters**

Hinges and the magnetic closer latch are installed using movable adapters, which can be freely positioned and adjusted along the profile.

- **Flexible On-Site Adjustment**

Allows for correction of door machining deviations, repositioning of adapters, and the addition or replacement of hinges and strike plates without dismantling the frame.



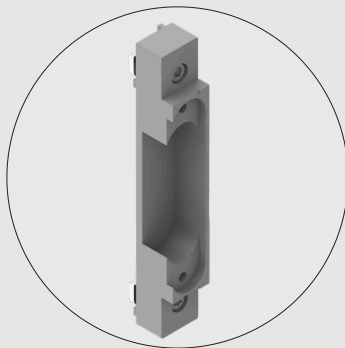
# Invisible.

## Modular. Universal.

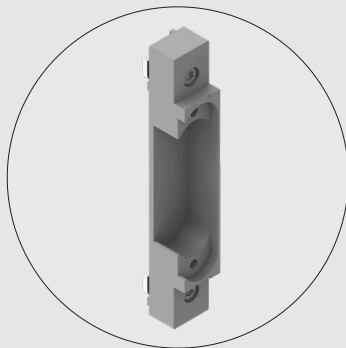
Adapters can be freely **positioned along the vertical profile of the frame**, allowing the hinge height to be adjusted according to the project's needs, without relying on fixed machining on the door leaf.

Additionally, hinges can be **added, changed, or replaced** at any time—even after the frame has been installed—without needing to dismantle it.

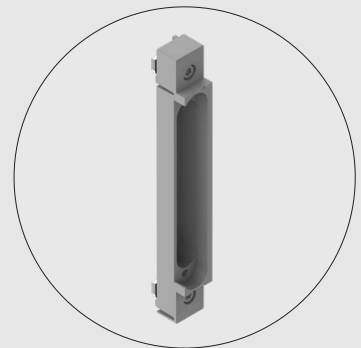
Once the adapter positions are set, the decorative cover profile is cut to size and easily clipped onto the frame profile, ensuring a clean and continuous finish.



AGB  
Eclipse 3.2



Krona  
K8060



Simonswerk  
TE240

Hinge adapters are designed to be **compatible with various 3D hinge models, including AGB, Krona, Simonswerk,** and other brands upon request.

## PREMIUM AESTHETICS

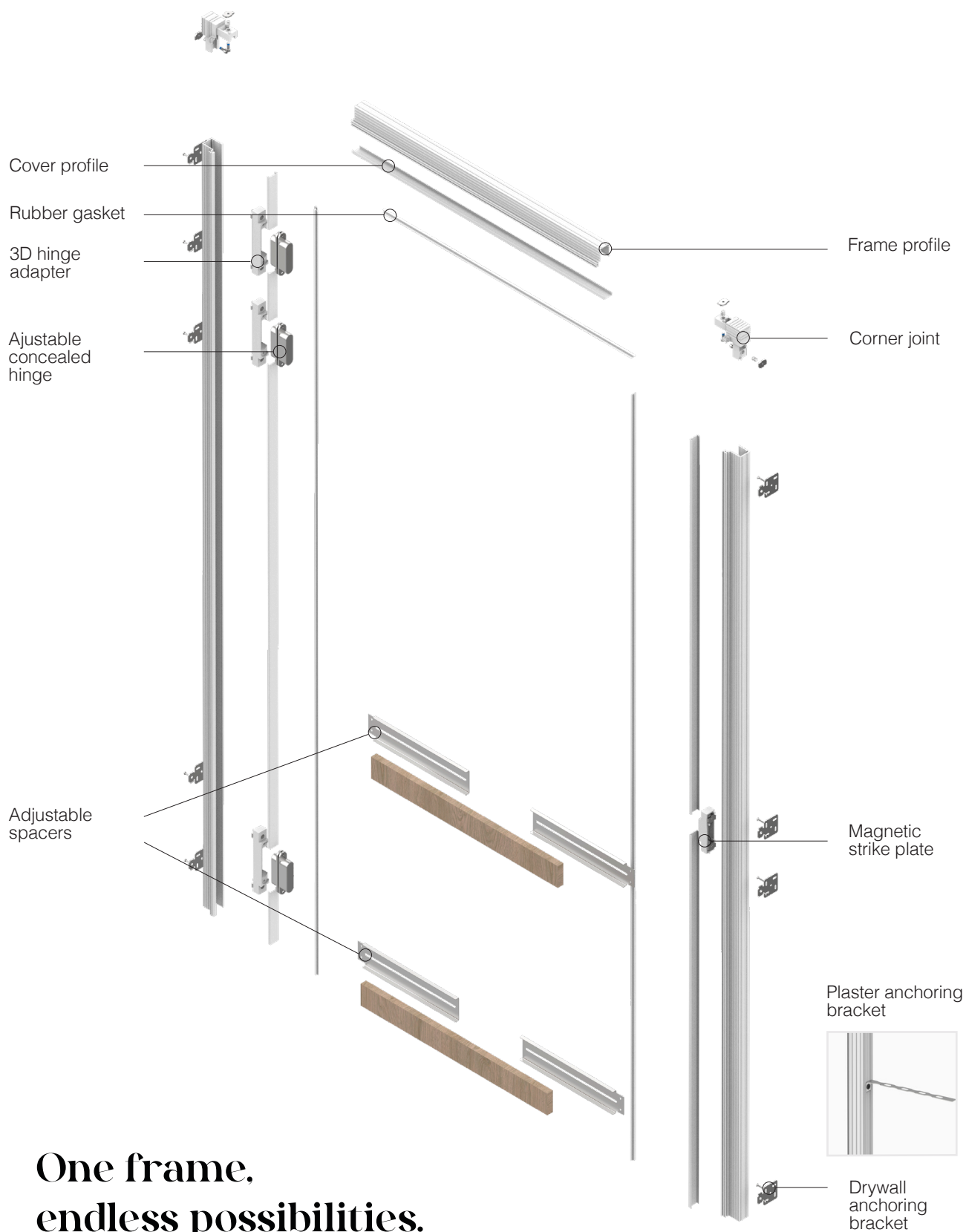
---

- Aluminum frame with **textured white primer** to ensure paint adhesion.

## NO CRACKS, NO SURPRISES

---

- Frame design optimized to ensure long-term stability and **prevent the appearance of microcracks over time.**
- **Integrated corner connectors** for a robust, movement-free frame.
- Secure and easy installation using **anchor brackets or metal plates**, suitable for drywall and masonry.

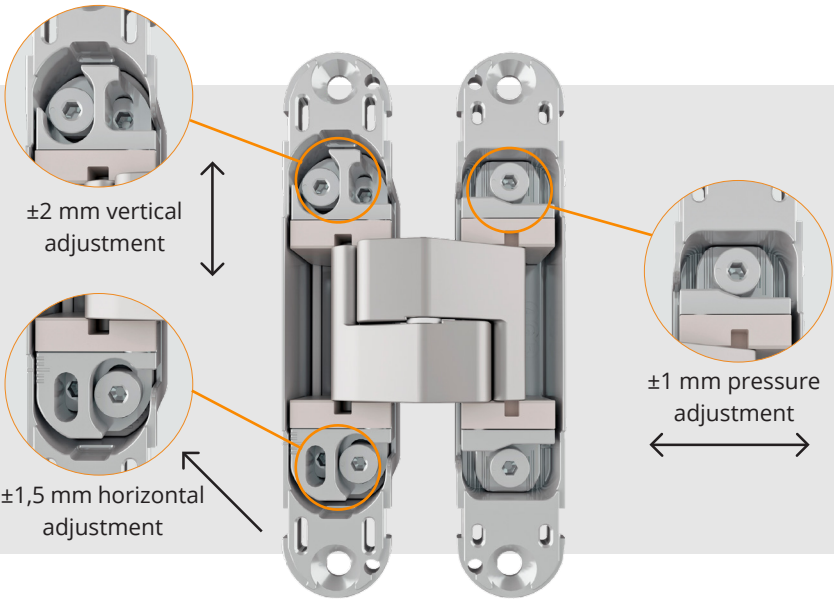


One frame,  
endless possibilities.



Accessories

AGB ECLIPSE 3.2 ADJUSTABLE CONCEALED HINGE

Adjustable on 3 completely independent axes (vertical, horizontal, and pressure adjustment) using a single hex key, allowing for precise, millimetric door alignment.



Recommended number of hinges based on door size and weight

									
	500	600	700	800	825	900	1000	1100	1200
1900	3					4			
2000									
2100									
2200									
2300									
2400	4					5			
2500									
2600									
2700									
2800									
2900									
3000									

3 Hinges - 60Kg 4 Hinges - 80Kg 5 Hinges - 100Kg



# Accessories

## WAVE AGB CONCEALED HANDLE

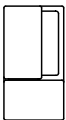
### Wave redefines door handle design.

With a linear, coplanar form, Wave integrates seamlessly into minimalist door designs, opening new possibilities for interior design projects.

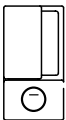
Unlike traditional handles, it not only serves a practical purpose but also enhances the overall aesthetic.

Wave retains all the functions of a conventional handle: it allows for comfortable and ergonomic door operation.

Additionally, when the door is open, the handle does not protrude—it remains fully flush with the surface.



WAVE AGB Concealed handle set



WAVE AGB Concealed handle set with privacy lock



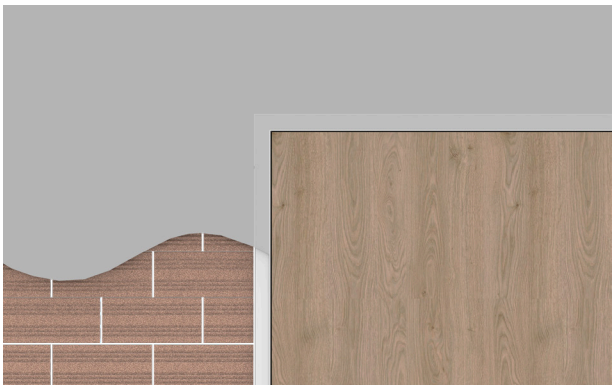


Installation variants

FINISHES

Masonry

Use fiberglass mesh before applying the mortar.



Fiberglass mesh (Not included)

Plasterboard

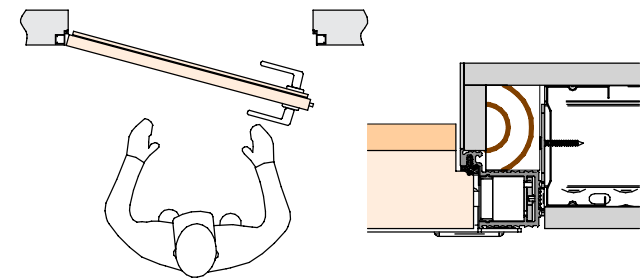
Use adhesive joint tape before applying the grout.



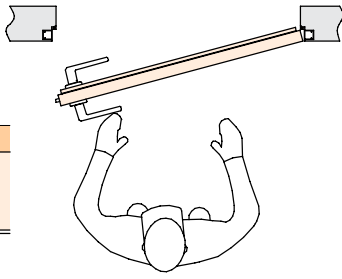
Joint cover tape (Not included)

OPENING VARIANTS

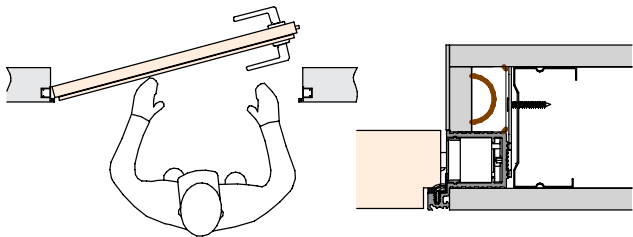
Pull Left



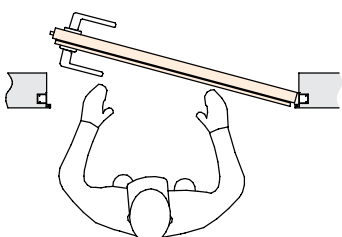
Pull Right



Push Left



Push Right

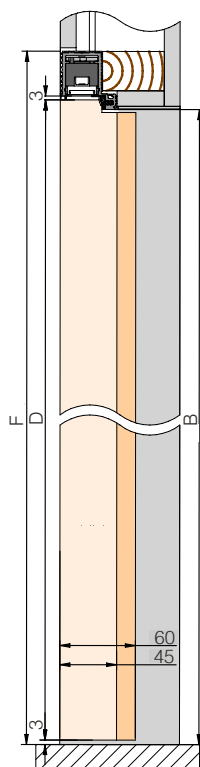


## Technical sheet

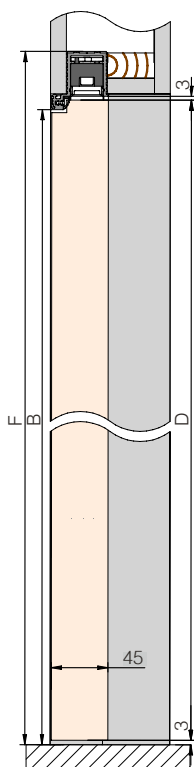
### SINGLE DOOR

#### With crossbeam

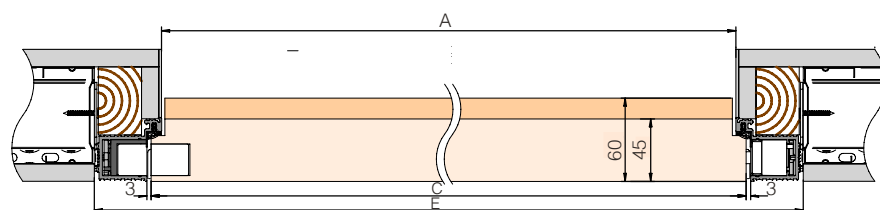
Pull



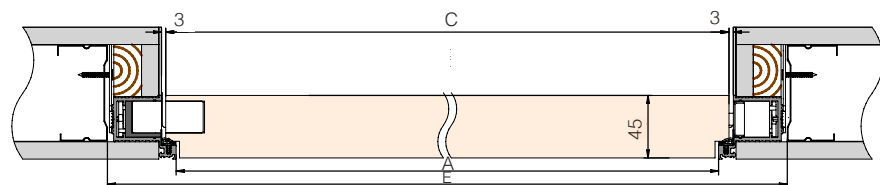
Push



Pull left



Push left



#### REGULATIONS

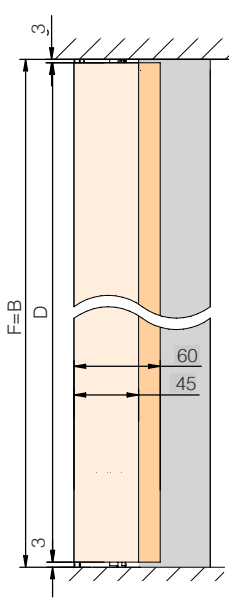
Pressure:  $\pm 1$  mm  
Vertical:  $\pm 2$  mm  
Horizontal:  $\pm 1.5$  mm

#### Dimensions

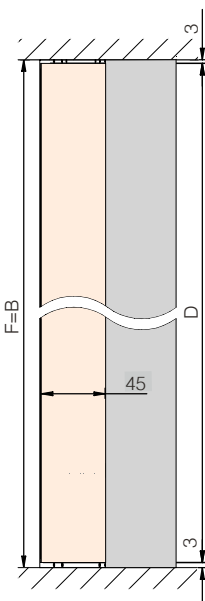
Door width:  $C = A + 16$  l. max. 1216mm  
Door height:  $D = B + 4$  l. max. 3004mm  
Wall opening width:  $E = C + 82$  l. max. 1298mm  
Wall opening height:  $F = B + 49$  l. max. 3049mm  
Clear vertical opening =  $B$  l. max. 3000mm  
Clear horizontal opening =  $A$  l. max. 1200mm  
Length of horizontal frame profile = Clear horizontal opening  
Length of vertical frame profiles = Clear vertical opening

#### Without crossbeam

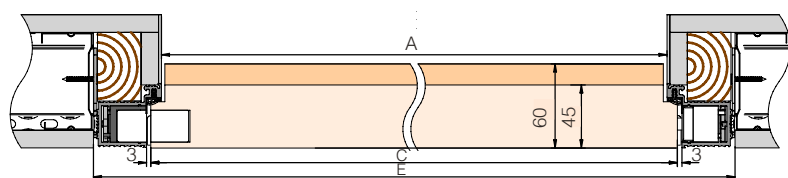
Pull



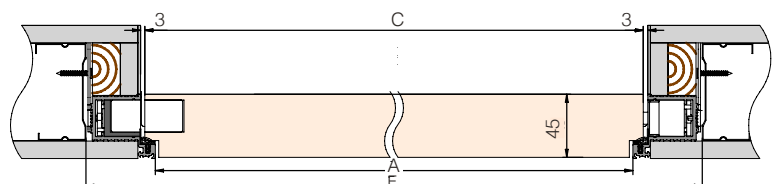
Push



Pull left



Push left



#### Dimensions

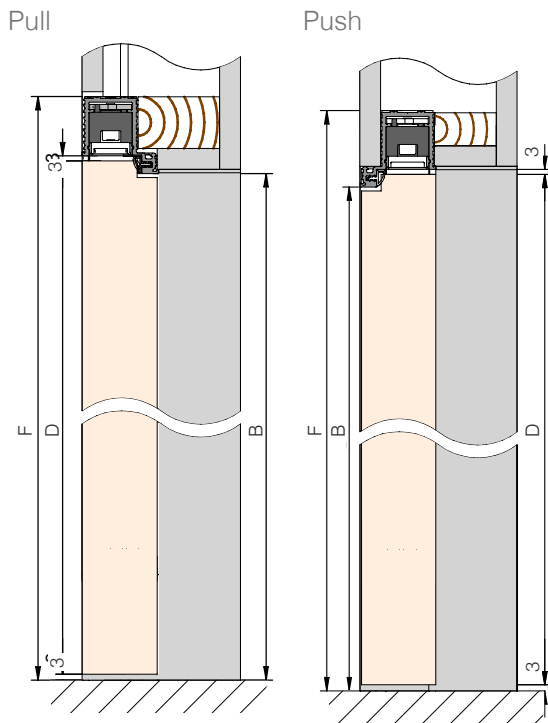
Door width:  $C = A + 16$  l. máx. 1216mm  
Door height:  $D = F - 6$  l. máx. 2994mm  
Wall opening width:  $E = C + 82$  l. máx. 1298mm  
Wall opening height:  $F = B$  l. máx. 3000mm  
Clear vertical opening =  $B$  l. máx. 3000mm  
Clear horizontal opening =  $A$  l. máx. 1200mm  
Length of horizontal frame profile = Clear horizontal opening  
Length of vertical frame profiles = Clear vertical opening



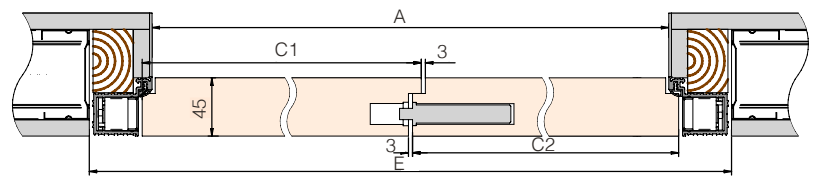


## DOUBLE DOOR

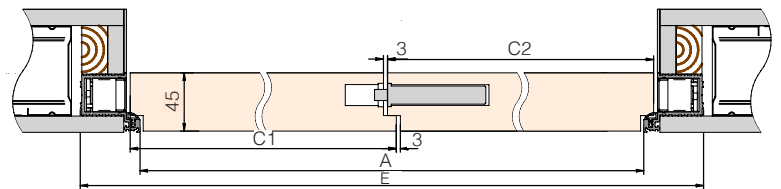
### With crossbeam



Pull left



Push left



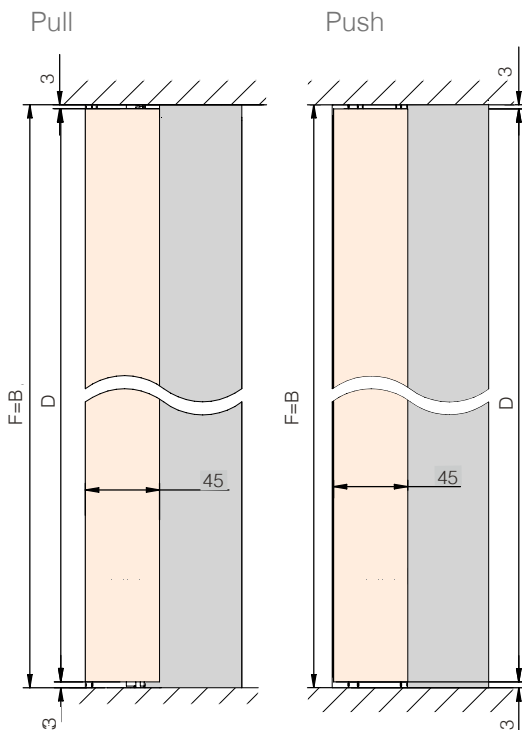
#### REGULATIONS

Pressure:  $\pm 1$  mm  
Vertical:  $\pm 2$  mm  
Horizontal:  $\pm 1.5$  mm

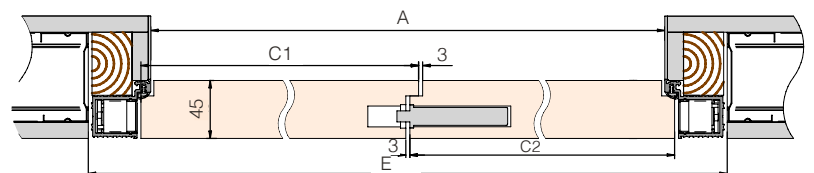
#### Dimensions

Door width:  $(C1/C2) = (A/2) + 11$  | max. 1161 mm  
Door height:  $D = B + 4$  | max. 3004 mm  
Wall opening width:  $E = (2 \times C) + 75$  | max. 2397 mm  
Wall opening height:  $F = B + 49$  | max. 3049 mm  
Clear vertical opening =  $B$  | max. 3000 mm  
Clear horizontal opening =  $A$  | max. 1200 mm  
Length of horizontal frame profile = Clear horizontal opening  
Length of vertical frame profiles = Clear vertical opening

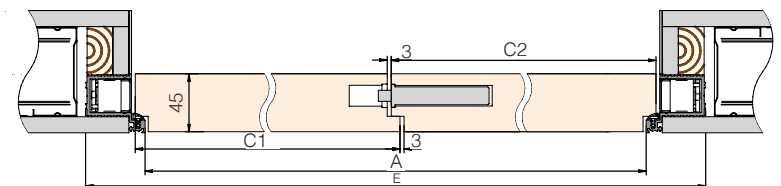
### Without crossbeam



Pull left



Push left



#### Dimensions

Door width:  $C = (A/2) + 11$  | max. 1161 mm  
Door height:  $D = F - 6$  | max. 2994 mm  
Wall opening width:  $E = (2 \times C) + 75$  | max. 2397 mm  
Wall opening height:  $F = B$  | max. 3000 mm  
Clear vertical opening =  $B$  | max. 3000 mm  
Clear horizontal opening =  $A$  | max. 1200 mm  
Length of horizontal frame profile = Clear horizontal opening  
Length of vertical frame profiles = Clear vertical opening

## — How to order a SF-Line+?

### 1. CHOOSE YOUR KIT



**15 YEARS**  
WARRANTY

#### COMPLETE KIT (ALL INCLUDED)

**Includes all components needed for a complete installation.**

The most practical and efficient option—no need to purchase additional items.

##### Contents

- Vertical Frame Profiles
- Horizontal Frame Profiles
- Adjustable spacers
- Corner joints
- Cover profile
- Hinge adapters
- AGB Eclipse 3.2 hinges
- Rubber gasket
- Magnetic strike plate

#### FLEXIBLE KIT (PROFILES ONLY)

Designed for those seeking adaptability and **flexibility in their choice**. Ideal for situations where some components are already available.

With this kit, **adapters, hinges, and accessories must be selected separately** according to the specific needs of each project.

##### Contents

- Vertical Frame Profiles
- Horizontal Frame Profiles
- Spacers
- Corner joints
- Decorative trims

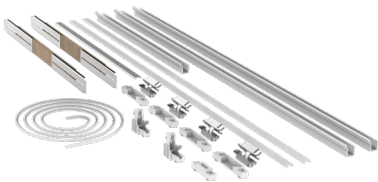


**The kit purchase requires selecting the following accessories:**

- Hinge adapter
- Magnetic strike plate
- Rubber gasket

COMPLETE KIT

Single door



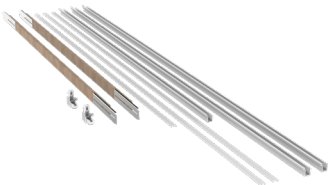
**Line+ kit.** Single door.  
x3 hinges.★

**Line+ kit.** Single door.  
x4 hinges.★

Finish	Cod.	Profiles
<div>S</div>	2102300100021	2300x1000mm
<div>W</div>	2102300100022	
<div>B</div>	2102300100023	
<div>S</div>	2103000120021	3000x1200mm
<div>W</div>	2103000120022	
<div>B</div>	2103000120023	

FLEXIBLE KIT

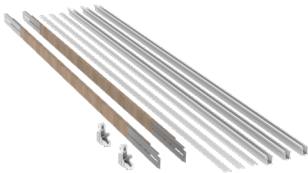
Single door



**Line+ Flexible kit.** Single door.

Finish	Cod.	Profiles
	2102300100012	2300x1000mm
	2103000120012	3000x1200mm
	2202300100012	2300x2300mm
	2203000120012	3000x2300mm

Double door



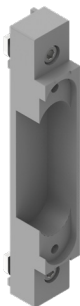










**Line+ Flexible kit.** Double door.







★ Refer to the "Recommended number of hinges based on door size and weight " (p.8) for sizes that require the purchase of an additional hinge.





LINE + TIMBER

2. CHOOSE YOUR ACCESSORIES

ACCESSORIES (FLEXIBLE KIT)

   Hinge adapter	Finish	Cod.	Accessories
		0 502 08	AGB Eclipse 3.2
		0 502 00	
		0 502 01	
		0 502 02	Krona K8060
		0 502 03	
		0 502 04	
		0 502 05	Simonswerk TE240
		0 502 06	
	0 502 07		
		Other brands <sup>1</sup>	

  0,5mm   Adapter set with magnetic door strike plate <sup>2</sup>		01 000 93	
		01 000 94	
		01 000 95	

   Rubber gasket		00 45 91	6m
		00 45 92	

<sup>1</sup> Other brands: BASYS > DX 38-33D | OTLAV > INVISACTA IN232 | JNF > IN-05.065  
<sup>2</sup> Compatible magnetic latches: AGB > Polaris 2XT | Krona > Spinof | JNF > 911.23.092 | Häfele > 911.23.792/092 | Inther > B-Forty Cond

 Not Included in the flexible kit, selection required.



Silver plastic



White plastic



Black plastic







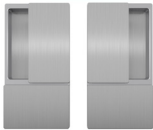


White PVC



Black PVC



OPTIONAL ACCESSORIES (FLEXIBLE I COMPLETE KIT)

		Finish	Cod.	
	AGB Eclipse 3.2 Adjustable concealed hinge	<div>MC</div> <div>MW</div> <div>MB</div>	0 501 10 0 501 13 0 501 15	
	Polaris 2XT AGB Magnetic latch for privacy lock Hub = 8mm / Privacy pin = 6mm / Backset = 50mm	<div>MC</div> <div>MW</div> <div>MB</div>	00 1000 82 00 1000 83 00 1000 87	
	Polaris 2XT AGB Magnetic latch for cylinder lock Hub = 8mm / Keylock = 6mm / Backset = 50mm	<div>MC</div> <div>MW</div> <div>MB</div>	00 1000 85 00 1000 86 00 1000 88	
	Polaris 2XT WAVE AGB with magnetic latch Aguja = 50mm	<div>MC</div> <div>MW</div> <div>MB</div>	00 1100 00 00 1100 01 00 1100 02	
	WAVE AGB Concealed handle set	<div>MC</div> <div>MW</div> <div>MB</div>	00 1100 10 00 1100 11 00 1100 12	
	WAVE AGB Concealed handle set with privacy lock	<div>MC</div> <div>MW</div> <div>MB</div>	00 1100 20 00 1100 21 00 1100 22	
	Honeycomb door	<div>white primed</div>		Request according to measurements

MC

Matte chrome

MW

Matte white

MB

Matte black



## Notas

Notes | Notes

# LINE+ TIMBER | SF-LINE+



**BOXKEL**  
by Saheco

Polígono Industrial de Foradada / 08580  
St. Quirze de Besora / Barcelona / Spain  
T +34 93 852 92 23  
[saheco@saheco.com](mailto:saheco@saheco.com)

Export contact details  
T +34 93 852 96 15  
[export@saheco.com](mailto:export@saheco.com)  
[saheco.com](http://saheco.com)

